

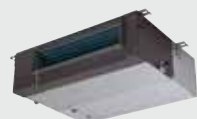
# DUCTLESS & VRF

## PRODUCT FAMILY BROCHURE

**bryant**

Heating & Cooling Systems

**WHATEVER  
IT TAKES.**



# IT TAKES

your comfort to new places.

Spring 2017

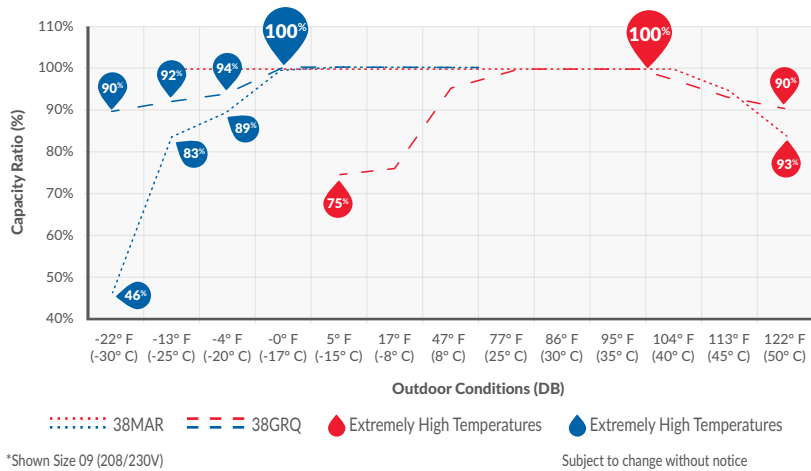
# Versatile Ductless & VRF Systems fit practically any need.

Bryant® offers a complete line of Ductless & VRF HVAC systems designed to make any space more comfortable. Our Bryant Ductless & VRF systems are compact, not to mention easy on the eyes. When it comes to creating comfort, one size or system may not fit all, but one name does: Bryant.

## IT TAKES year-round comfort

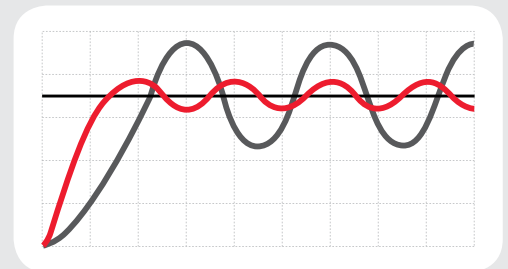
In the search for more comfort, Bryant Ductless & VRF delivers in more ways than one. Using Bryant Ductless, you will experience excellent heating when outdoor temperatures are down to -22° F and cooling when outdoor temperatures are up to 130° F, depending on system.

### Ductless Capacity at Extreme Temperatures



## Bryant Inverter Technology

Inverter technology will supply constant and comfortable temperatures with quieter operation. Compressor speed adjusts to heating or cooling needs. Variable speed equals energy savings since the compressor does not operate continuously at maximum capacity.



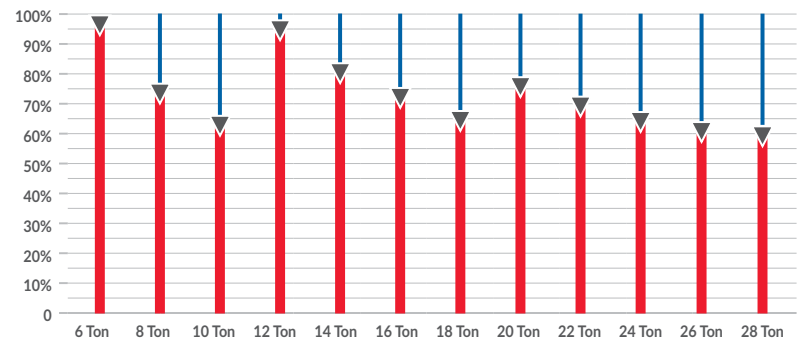
- Inverter Compressor
- Fixed Speed Compressor
- Setpoint Temperature

Use Ductless so you don't waste energy and money heating or cooling an unoccupied room.



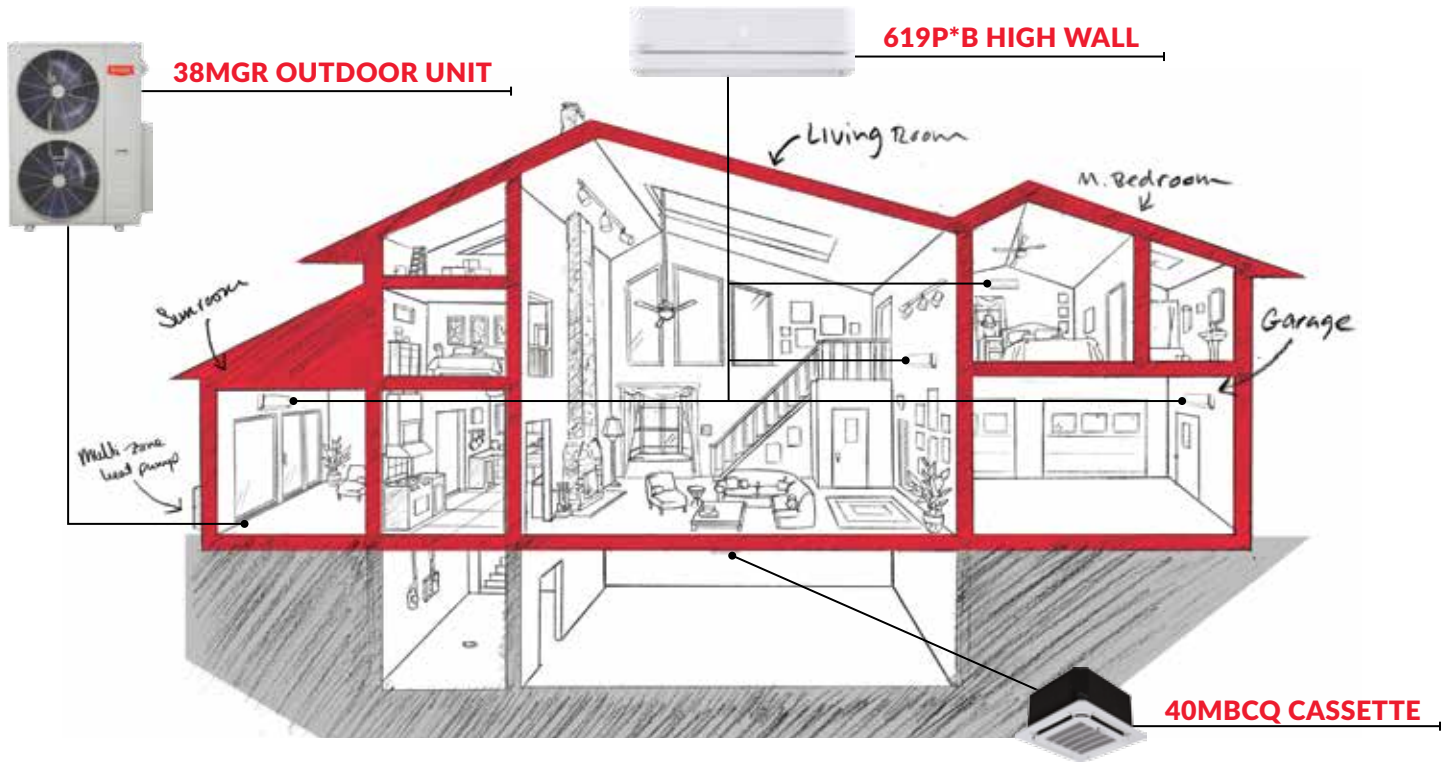
### VRF Systems

Our Bryant VRF systems provide heating down to -13 degrees and cooling up to 125 degrees Fahrenheit, depending on the system. With that level of performance, it's easy to imagine the ideal comfort you will enjoy on a daily basis.



# The Ductless Solution

Because ductless units are versatile in size, install location and style, they are a perfect solution to most home comfort needs. You have control over the temperature in each room, allowing you to customize your comfort. With Bryant® Ductless, you can address hot and cold spots throughout your home, make a garage or sunroom more functional for all seasons or provide added comfort to virtually any space in your home.



# The VRF Solution

You know what your building needs. Zoned comfort, better air quality, energy efficiency, design flexibility and long-term savings. Nothing delivers them all like a Bryant Variable Refrigerant Flow (VRF) system. Through it, you can power up to 64 independent indoor units, providing precise, energy-efficient comfort control on a zone-by-zone basis with a single outdoor condenser. You can cool one area while heating the other or simply provide comfort control to only those zones that are in use. With the flexibility and performance operation of the Bryant VRF heat recovery and heat pump systems, you have the options to create the right solution for your building's and customer needs.



SINGLE ZONE RESIDENTIAL

EVOLUTION SYSTEM

F SYSTEM

HEAT PUMP

Inverter Compressor

UP TO 30.5 SEER UP TO 10.3 HSPF



COOLS UP TO **129° F**  
HEATS DOWN TO **-22° F**



538FEQXXRBGA

619F HIGH WALL



09 K  
12 K  
18 K

619FEQXXHBGA (WHITE)



09 K  
12 K  
18 K

619FEQXXBBGA (GRAY)

Peace & Quiet & Comfort

Baseboard heaters, electric wall units and window air conditioners can all be noisy and disruptive. Bryant® Ductless & VRF gives you a more peaceful solution. And that's purely intentional.

Our Ductless indoor units are designed to perform efficiently and quietly inside a sound-suppressing insulated cabinet. When tested, our Evolution® High Wall units provide sound levels as low as 26 dB(A), which is comparable to a bedroom at night or an evening in a quiet, rural area.



20  
dB(A)

INSIDE RECORDING STUDIO

26  
dB(A)

BRYANT DUCTLESS INDOOR UNITS

30  
dB(A)

LIBRARY

55  
dB(A)

DISHWASHER, NEXT ROOM

70  
dB(A)

NORMAL SPEECH AT 3 FT.

110  
dB(A)

LOW JET FLYOVER (1000 FT)

Source: <http://www.dot.ca.gov/>

**SINGLE ZONE RESIDENTIAL**



UP TO **25.0 SEER** UP TO **12.0 HSPF**

COOLS  
UP TO

**122°F**

HEATS  
DOWN TO

**-22°F\***



**38MA\*R OUTDOOR  
HEAT PUMP**

*Inverter Compressor  
matched with:*

**Preferred  
SERIES™**

38MAQBXXR--3

Note: Compatible using  
the 24V Interface

\* On select models

**619P\*B  
HIGH WALL**



619PEQXXBBMA

09 K  
12 K  
18 K  
24 K  
30 K  
36 K

**40MBCQ  
CASSETTE**



40MBCQXX---3

09 K  
12 K  
18 K

**619R\*D  
DUCTED**



619REQXXDBMA

09 K  
12 K

**40MBDQ  
DUCTED**



40MBDQXX---3

18 K  
24 K

**40MBFQ  
FLOOR CONSOLE**



40MBFQXX---3

09 K  
12 K



38MHC\*\*A--1 / 3 (COOLING)  
38MHRQ\*\*A--1 / 3 (HEAT PUMP)



Note: Compatible using  
the 24V Interface

UP TO **17.5 SEER** UP TO **9.0 HSPF**

COOLS  
UP TO

**122°F**

HEATS  
DOWN TO

**0°F**

**MH SYSTEM  
AIR CONDITIONER  
and HEAT PUMP**

*Inverter Compressor*

**LEGACY  
LINE™**

**40MHHC  
HIGH WALL  
AIR CONDITIONER**



40MHHC\*\*---1 / 3

09 K  
12 K  
18 K  
24 K

**40MHHQ  
HIGH WALL  
HEAT PUMP**



40MHHQ\*\*---1 / 3

09 K  
12 K  
18 K  
24 K

**MULTI-ZONE RESIDENTIAL**

**EVOLUTION SYSTEM**

**K SYSTEM**

**HEAT PUMP**

*Inverter Compressor*

UP TO **22.0 SEER** UP TO **10.2 HSPF**



COOLS  
UP TO  
**119°<sub>F</sub>**

HEATS  
DOWN TO  
**-4°<sub>F</sub>**



18 K  
24 K  
30 K

36 K  
42 K

48 K  
56 K



538KEQXXXRXGA

**619F / K\*B  
HIGH WALL**



09 K  
12 K  
18 K

619FEQXXXHBGA (WHITE)



09 K  
12 K  
18 K

619FEQXXXBBGA (GRAY)



09 K  
12 K  
18 K  
24 K

619KEQXXXBBGA

**619K\*C  
CASSETTE**



12 K  
18 K  
24 K

619KEQXXXCBGA

**619K\*D  
DUCTED**



09 K  
12 K  
18 K  
21 K  
24 K

619KEQXXXDBGA

**619K\*F  
FLOOR CONSOLE**



09 K  
12 K  
18 K

619KEQXXXFBGA

# Ductless & VRF Applications

**HOT OR COLD SPOTS**

For rooms with hot or cold spots, Bryant® Ductless systems can provide more complete control, targeting those areas with uneven temperatures for more consistent comfort throughout your whole home.

**CONVERTED ATTICS AND BASEMENTS**

Ductless systems work well in rooms with tight spaces and/or hard-to-control temperatures. Inverter technology allows the system to run longer cycles at lower fan speeds, which helps the system dehumidify while cooling. Less humidity means more comfort, even at higher temperatures in attics, and better control of comfort in lower natural-light conditions typical in basements.

**GARAGES**

For a space that may not be connected to your home's central HVAC, ductless offers compact cooling and heating power to keep you comfortable all year long.

**RENOVATIONS AND ADDITIONS**

Bryant Ductless systems can be easily integrated into new architecture. Because they don't require a connection to existing ductwork, no special accommodations need to be made for additional space between walls or above ceilings.

## MULTI-ZONE RESIDENTIAL



38MGRQXXX--3

UP TO 23.8 SEER UP TO 10.5 HSPF

COOLS UP TO HEATS DOWN TO

122° -22° F



## MGR SYSTEM

### HEAT PUMP

Inverter Compressor

Preferred  
SERIES™

### 619P\*B HIGH WALL



09 K  
12 K  
18 K  
24 K

619PEQXXXBBMA

### 40MHHQ HIGH WALL



09 K  
12 K  
18 K  
24 K

40MHHQ\*\*---1 / 3

### 40MBCQ CASSETTE



09 K  
12 K  
18 K

40MBCQXX---3

### 619R\*D DUCTED



09 K  
12 K

619REQXXXDBMA

### 40MBDQ DUCTED



18 K  
24 K

40MBDQXX---3

### 40MBFQ FLOOR CONSOLE



09 K  
12 K

40MBFQXX---3

## STRIP MALL RETAIL SPACES

Light commercial systems offer power and flexibility when a business needs to be divided into smaller units or expand in size.

## LARGER COMMERCIAL APPLICATIONS

Carrier VRF heat recovery and heat pump systems provide impressive flexibility with the ability to connect up to 64 indoor units to one outdoor unit. And they offer flexibility in piping configuration – up to 3,280 feet. Fewer limitations makes it easier to design.

## SUNROOMS

In a room with a lot of windows and less wall space to hang a unit (as in a sunroom with mostly glass walls), a console unit can be installed detached from the wall on feet, allowing for lower-impact installation.

## EMPTY NESTS

Less kids means more space. In a home where some rooms are no longer being used every day, Bryant® Ductless systems can be configured so you only heat or cool spaces when you're using them, and you can save on energy when you're not.

**SINGLE ZONE LIGHT COMMERCIAL**



36K  
48K

UP TO 17.4 SEER UP TO 10.5 HSPF

COOLS  
UP TO

HEATS  
DOWN TO

122° -22°F

38MBRQXXA--3

**MBR SYSTEM**

**HEAT PUMP**

*Inverter Compressor*

Preferred  
SERIES™

**40MBDQ  
DUCTED**



36 K  
48 K

40MBDQXX---3



UP TO 14.0 SEER UP TO 8.2 HSPF

COOLS  
UP TO

HEATS  
DOWN TO

125°F 17°F

124AXS0XX000 (COOLING)  
224AXS0XX000 (HEAT PUMP)

**MK SYSTEM**

**AIR CONDITIONER  
and HEAT PUMP**

*Fixed Speed  
Compressor*

Preferred  
SERIES™

**40MK\*B  
HIGH WALL**



18 K  
22 K



18 K  
22 K  
24 K  
28 K  
32 K

40MKCBXXB--3 (COOLING)  
40MKQBXXB--3 (HEAT PUMP)

**40MK\*C  
CASSETTE**



18 K  
24 K  
30 K  
34 K

40MKCBXXC--3 (COOLING)  
40MKQBXXC--3 (HEAT PUMP)

**40MK\*F  
UNDERCEILING**



18 K  
24 K  
30 K  
34 K  
36 K  
48 K  
54 K

40MKCBXXF--3 (COOLING)  
40MKQBXXF--3 (HEAT PUMP)



VRF (VARIABLE REFRIGERANT FLOW)

**THREE-PHASE VRF SYSTEM**

**HEAT RECOVERY**  
Inverter Compressor

UP TO 24.2 IEER UP TO 30.0 SCHE

COOLS UP TO **125°** HEATS DOWN TO **-13°F**



**38VMR**  
38VMAXXRDSX-1

72-240K



**THREE-PHASE VRF SYSTEM**

**HEAT PUMP**  
Inverter Compressor

UP TO 23.3 IEER UP TO 4.29 COP

COOLS UP TO **125°** HEATS DOWN TO **-5°F**



**38VMH**  
38VMAXXHDSX-1

72-432K



**SINGLE-PHASE VRF SYSTEM**

**HEAT PUMP**  
Inverter Compressor

UP TO 18.6 SEER UP TO 10.0 HSPF

COOLS UP TO **118°** HEATS DOWN TO **-13°F**



38VMA036XXXHDS3-1

36-60K



**40VMW**  
HIGH WALL



40VMWXXX---3

07 K  
09 K  
12 K  
15 K  
18 K  
24 K  
30 K

**40VMC / 40VMF**  
CASSETTE



40VMCXXX---3



40VMFXXX---3

07 K  
09 K  
12 K  
15 K  
18 K  
24 K  
30 K  
36 K  
48 K

**40VMM**  
MEDIUM DUCT



07 K-48 K  
40VMMXXX---3

**40VML/40VMH**  
LOW & HIGH STATIC



07 K-24 K  
40VMLXXX---3

24 K-96 K  
40VMHXXX---3

**40VMA**  
OUTSIDE AIR



36 K-96 K  
40VMAXXX---3

**40VMU**  
UNDERCEILING  
(CEILING/FLOOR CONSOLE)



40VMUXXX---3

12 K  
15 K  
18 K  
24 K  
30 K  
36 K  
48 K

**40VMV**  
VERTICAL AHU



40VMVXXX---3

18 K  
24 K  
30 K  
36 K  
48 K  
54 K

**40VMR**  
FLOOR CONSOLE



40VMRXXX---3

07 K  
09 K  
12 K  
15 K  
18 K  
24 K

For more than a century, homeowners have associated Bryant® heating and cooling products with the highest standards of indoor comfort and Bryant dealers as service leaders. Through commitment and dedication of our product development and manufacturing teams, we have consistently met every new challenge head-on and delivered the products to meet or exceed expectations. Our national network of passionate Bryant dealers is at the forefront of our success. Knowledgeable in the field, and equipped to address your home comfort needs, our dealers deliver customized comfort solutions to you and your family by doing

**WHATEVER IT TAKES.®**

Since 1904



Visit our website at  
[BryantDuctless.com](http://BryantDuctless.com) or [BryantVRF.com](http://BryantVRF.com)

7310 West Morris Street, Indianapolis, IN 46231

Wi-Fi® is a registered trademark of Wi-Fi® Alliance Corporation.